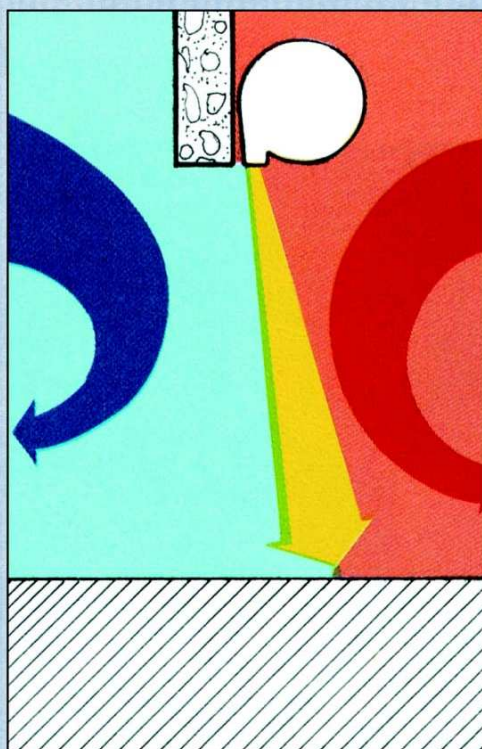




Hűtőtechnika
Holding Kft.

T L F
AIR PARTITION

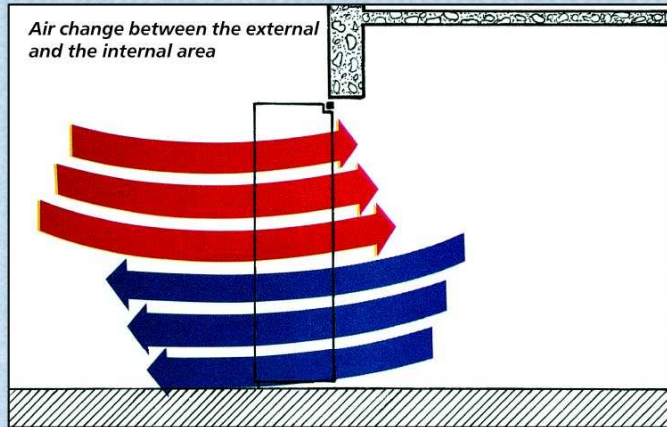
AIR PARTITION



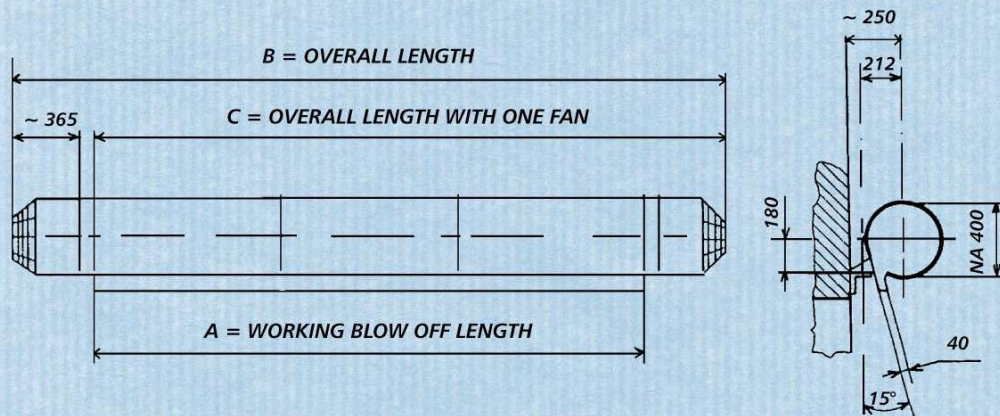
H-2890 Tata, Szomódi út 4., Pf.: 301
Tel.: (36-34) 487-122, 487-806
Fax: (36-34) 487-218, 487-855
E-mail: mirelta@mirelta.hu
Web: www.mirelta.hu

08. 2004

If the door or the gate of the cooled room is open, the expensive cold air is streaming forth and the external warm air sweeps in.



The open doors and gates mean a great loss of heat. The cool internal air is streaming out of the cooling chamber near to the floor level, whilst the external warm air sweeps in the cooled area at the upper part of the open door or gate. Thus the temperature of the room is growing. This phenomenon is increased by the wind, the air pressure caused by the fans of the refrigerating equipment and the possible untightness of the building, respectively. The warm air streaming in must be cooled down to the temperature of the internal area, which means a high additional energy consumption.



Type identification

Explanation of air partition type identification: e.g.: **TLF 2 - 3**

Type identification _____
 Number of engines _____
 Working blow off length [m] _____

Principle explanation of electrical design with engine arrangement on the right side (facing the door opening).

The air jet of the installed air partition equipment blocks the intensive air change commencing through the open doors, ensuring the following advantages for the user:

- decreases the loss of energy,
- blocks entering of dust and other contaminants,
- keeps off the higher humidity of the external air (sweating out on the goods when cooling down),
- prevents warming up of the goods arranged next to the doors.

Comprehensive table of TLF type air partition

Type	A	B	C	Ø	Fan (pc)	Engine	Weight (kg)
TLF 1-2	2000	-	2470	NA 400	1	U=380 V/50Hz P=0,55 kW n=1350 1/min	22
TLF 2-2	2000	2920	-		2		32
TLF 1-2,5	2500	-	2945		1		25
TLF 2-2,5	2500	3440	-		2		35
TLF 1-3	2970	-	3440		1		27
TLF 2-3	2970	3910	-		2		37
TLF 2-3,5	3460	4400	-		2		40
TLF 2-4	3950	4900	-		2		43
TLF 2-4,5	4450	5390	-		2		46

Construction

The TLF air partition family is designed for a top blow off mode. They are to be mounted horizontally above the external side of the doors of the area to be protected.

They have a simple construction, assembled from typical panels.

The air partition is a plate cylinder opened at one or both ends having a tangential blow off opening in the full length of its generating line.

A similarly cylindrical reinforced fan housing is connected to the flanges of the open end by means of bolted joint. In these housings axial fans producing the air jet are placed. The impellers are mounted directly onto the electric engines' shaft. The fans facing each other have a contrary rotation direction. The electric engines are of three phase, short-circuit type.

In the blow off opening there are guide-blades ensuring the air jet speed stability at whole length of the blow off opening.

The body of the air partition is made of unalloyed aluminium plate, scaled or painted, or of stainless steel plate, respectively. Hereby the longtime endurance of the equipment is ensured.

The intake of larger foreign pieces and the incidental touching of the impellers is prevented by means of protective grids.

Assortment

The air partition can be manufactured in a standard form with a diameter of 400 mm and a working blow off length of 2; 2,5; 3; 3,5; 4; 4,5 meters according to the dimensions of the gate or the door, as well as in compliance with the installation possibilities. They are manufactured with one or two fans. The one fan types may be purchased with right-hand and left-hand arrangement. On the standard type the fan is mounted on the right side.

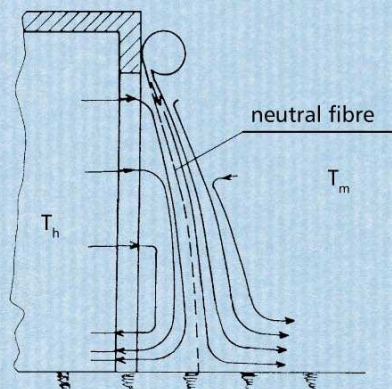
In case of special demands individually designed and constructed air partition can be manufactured, as well.

Operation

Our air partition is developed with accurate design and experimental labour. Its parameters make it suitable for general use in refrigerating plants up to a door height of appr. 3,5 m.

In other cases it is expedient to consult the manufacturer!

mirelta



The air partition means inevitable accessories of the refrigerating plants, cold-storage plants and cold-stores. By means of this significant energy saving can be achieved and it prevents considerably the undesirable air change between the external and internal area.

MIRELTA makes efforts
to provide the honoured customers
and purchasers with the **best** services in every respect,
in compliance with their demands.

To meet this requirement our company has introduced in the year 1997 the

QUALITY ASSURANCE SYSTEM ÖNORM EN ISO 9002

which *is used* in the field of

- **production**
- **installation**
- **customers' service**

complying with the prescribed requirements.



Our specialist are available for our kind customers
for further informations at any time.

H-2890 Tata, Szomódi út 4., Pf.: 301
Tel.: (36-34) 487-122, 487-806
Fax: (36-34) 487-218, 487-855
E-mail: mirelta@mirelta.hu
Web: www.mirelta.hu

